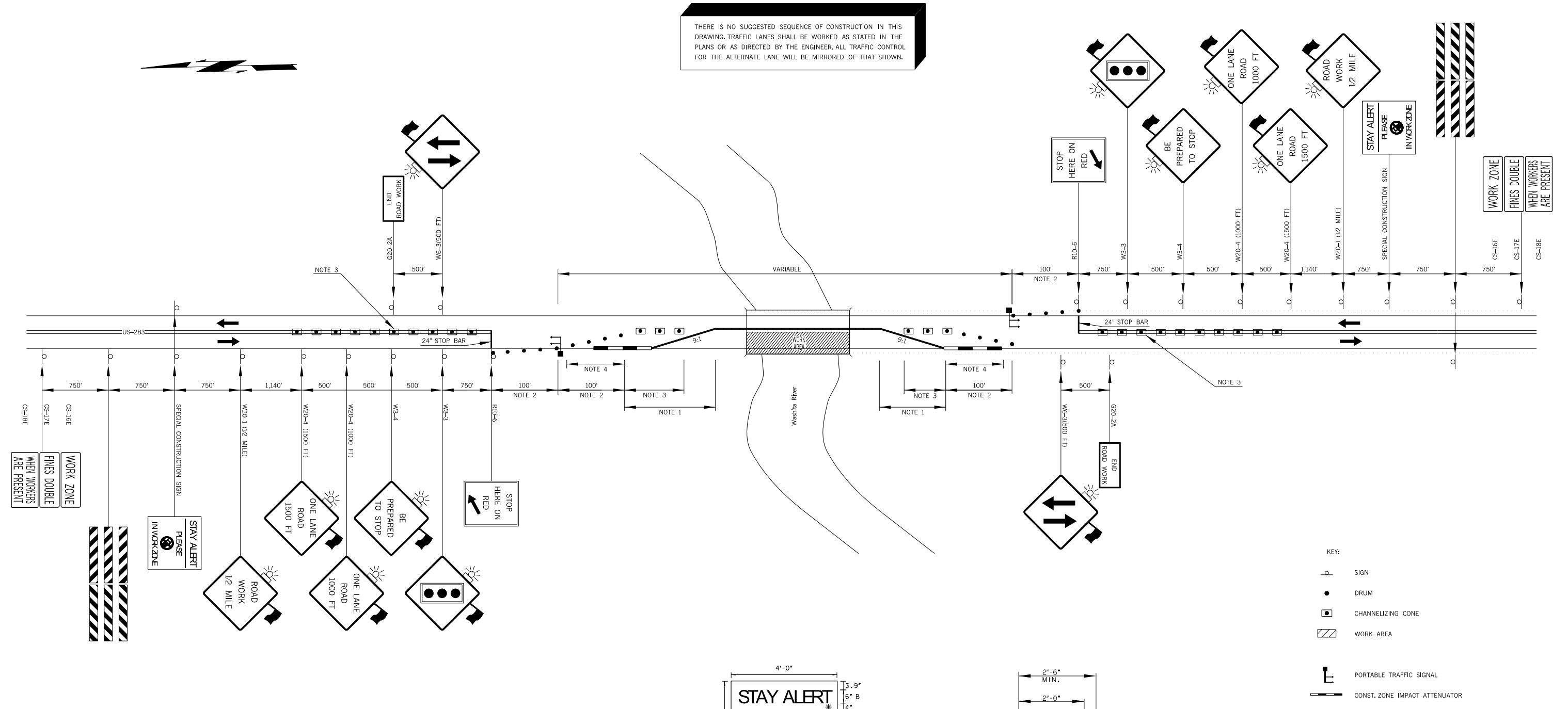


THERE IS NO SUGGESTED SEQUENCE OF CONSTRUCTION IN THIS DRAWING. TRAFFIC LANES SHALL BE WORKED AS STATED IN THE PLANS OR AS DIRECTED BY THE ENGINEER. ALL TRAFFIC CONTROL FOR THE ALTERNATE LANE WILL BE MIRRORED OF THAT SHOWN.



- KEY:
- SIGN
 - DRUM
 - CHANNELIZING CONE
 - WORK AREA
 - PORTABLE TRAFFIC SIGNAL
 - CONST. ZONE IMPACT ATTENUATOR
 - PORTABLE LONGITUDINAL MEDIAN BARRIER

NOTE 1
 FLARE RATES FOR CONCRETE MEDIAN BARRIER IN TEMPORARY TRAFFIC CONTROL ZONES

SPEED *	FLARE RATE (MINIMUM)
40 M.P.H.	9 TO 1
45 M.P.H.	10 TO 1
50 M.P.H.	11 TO 1
55 M.P.H.	12 TO 1
60 M.P.H.	13 TO 1
65 M.P.H.	14 TO 1
70 M.P.H.	15 TO 1
75 M.P.H.	16 TO 1

* POSTED SPEED LIMIT PRIOR TO CONSTRUCTION

NOTE 2
 A MINIMUM OF FIVE (5) CHANNELIZING DEVICES SHALL BE PLACED THROUGH THIS AREA.

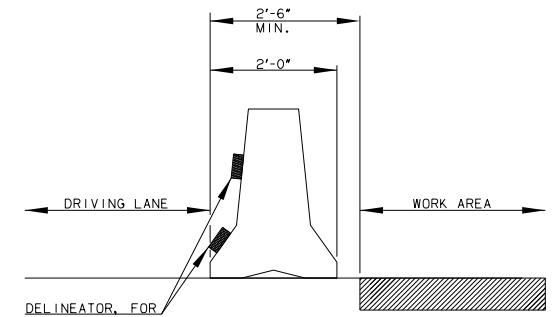
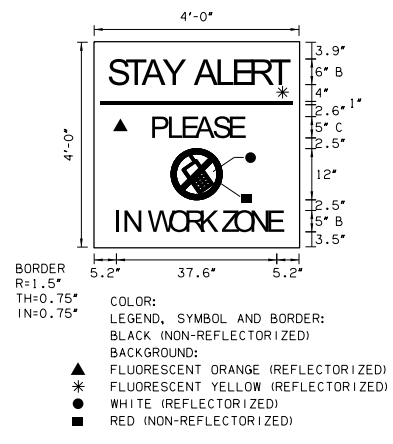
NOTE 3
 MAXIMUM SPACING BETWEEN CHANNELIZING DEVICES (FEET) SHALL BE TWICE THE POSTED SPEED LIMIT (M.P.H.) WITH THE FOLLOWING EXCEPTIONS. SPACING SHALL NOT EXCEED 50 FEET FOR CONES OR TUBE CHANNELIZERS. SPACING SHALL NOT EXCEED 75 FEET FOR CHANNELIZER CONES. SPACING SHALL NOT EXCEED 100 FEET FOR TYPE II BARRICADES, VERTICAL PANELS OR DRUMS.

NOTE 4
 IF CLEAR ZONE CAN BE MET BY FLARING MEDIAN BARRIER, THE CONST. ZONE IMPACT ATTENUATORS MAY BE OMITTED. SEE FLAIR RATE TABLE.

SIGNALS SHALL BE INSTALLED AND OPERATED IN ACCORDANCE WITH PART IV OF THE MANUAL ON UNIFORM TRAFFIC CONTROL DEVICES. TEMPORARY TRAFFIC CONTROL SIGNALS SHALL MEET THE PHYSICAL DISPLAY AND OPERATIONAL REQUIREMENTS OF CONVENTIONAL TRAFFIC SIGNALS.

THE INSTALLATION AND TIMING OF SIGNALS SHALL BE APPROVED BY THE DIVISION TRAFFIC ENGINEER PRIOR TO SIGNALS BEING PLACED IN OPERATION.

ALL CONFLICTING PAVEMENT MARKINGS AND RAISED PAVEMENT MARKER REFLECTORS BETWEEN THE ACTIVITY AREA AND THE STOP LINE SHALL BE REMOVED. AFTER COMPLETION OF THE WORK, THE STOP LINES AND OTHER TEMPORARY INAPPLICABLE PAVEMENT MARKINGS SHALL BE REMOVED.



NOT TO SCALE

TRAFFIC CONTROL DETAIL

Drawn	SRW	6/16
Design	SEB	6/16
Checked	JLS	6/16
TRAFFIC ENGINEERING JAMI SHORT		
STATE OF OKLAHOMA		DEPARTMENT OF TRANSPORTATION
DIVISION 5	JOB/PIECE NO. 31699 (04)	SHEET NO. T001